

FOR LEASE

CREATIVE OPEN SPACE OFFICE SUITES

450-466 GEARY STREET
SAN FRANCISCO, CA



CLASSIC
HISTORICAL
LOW-RISE

11'

HARD-LID
CEILINGS



HARDWOOD
FLOORS



OPERABLE
WINDOWS



ONE BLOCK TO
UNION SQUARE



93/100 RIDER'S
PARADISE

Located in the heart of Downtown San Francisco

Steps to retail and restaurant amenities

6 minute walk to Powell St BART station

Ample natural light throughout

SUITE AVAILABILITY

Building	Suite	Total SF
450	SUITE 100	±4,229
450	SUITE 500	±1,170
450	SUITE 400	±1,256

Building	Suite	Total SF
466	SUITE 100	±2,265
466	SUITE 400	±1,330
466	SUITE 401	±1,398

*For more leasing
information contact*

JIM WALKER
415.229.8910
jim.walker@kidder.com
LIC N° 01750435

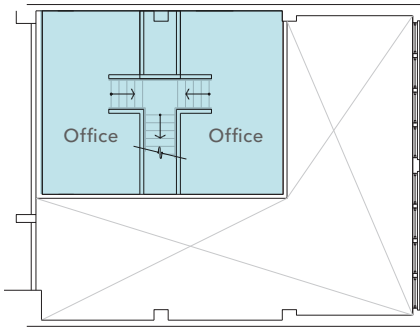
KATE SCHMITZ
415.229.8905
kate.schmitz@kidder.com
LIC N° 01998222

450-466GEARY.COM
KIDDER.COM

This information supplied herein is from sources we deem reliable. It is provided without any representation, warranty, or guarantee, expressed or implied as to its accuracy. Prospective Buyer or Tenant should conduct an independent investigation and verification of all matters deemed to be material, including, but not limited to, statements of income and expenses. Consult your attorney, accountant, or other professional advisor.



Mezzanine



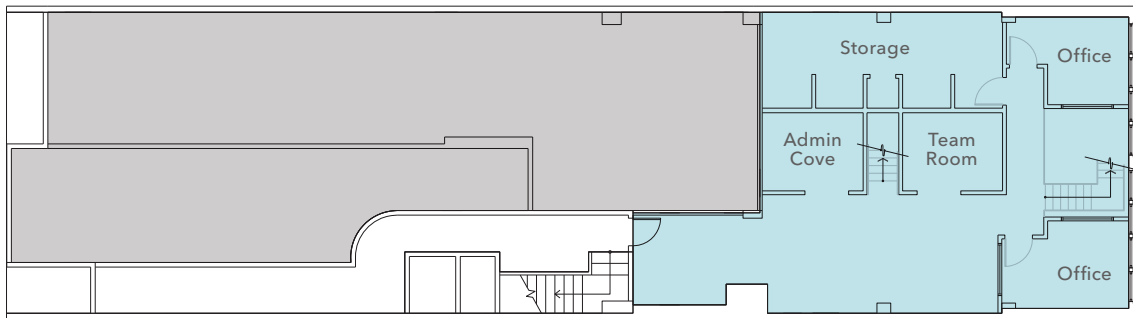
$\pm 4,229$
TOTAL SF AVAILABLE

3
LEVELS

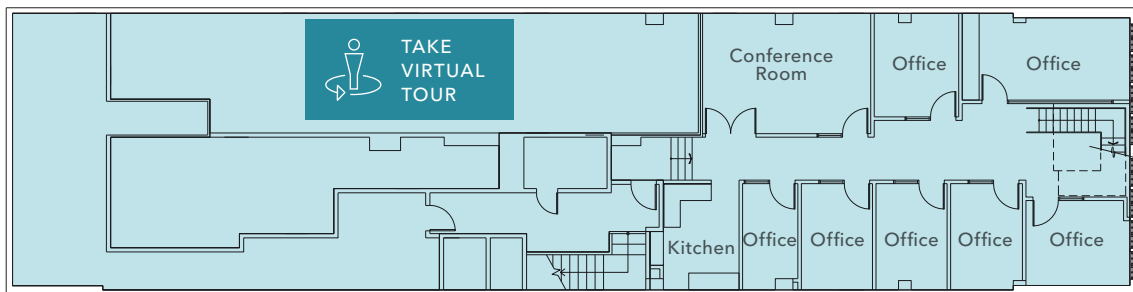
11
OFFICES

1
CONFERENCE ROOM

Ground Floor



Lower Level



Floor plans not to scale

Kitchen

Hard wood floors

Storage room

Outdoor patio

Admin cove

Open area

ADA wheel chair lift

Team room

450-466GEARY.COM

KIDDER.COM

This information supplied herein is from sources we deem reliable. It is provided without any representation, warranty, or guarantee, expressed or implied as to its accuracy. Prospective Buyer or Tenant should conduct an independent investigation and verification of all matters deemed to be material, including, but not limited to, statements of income and expenses. Consult your attorney, accountant, or other professional advisor.

Mezzanine

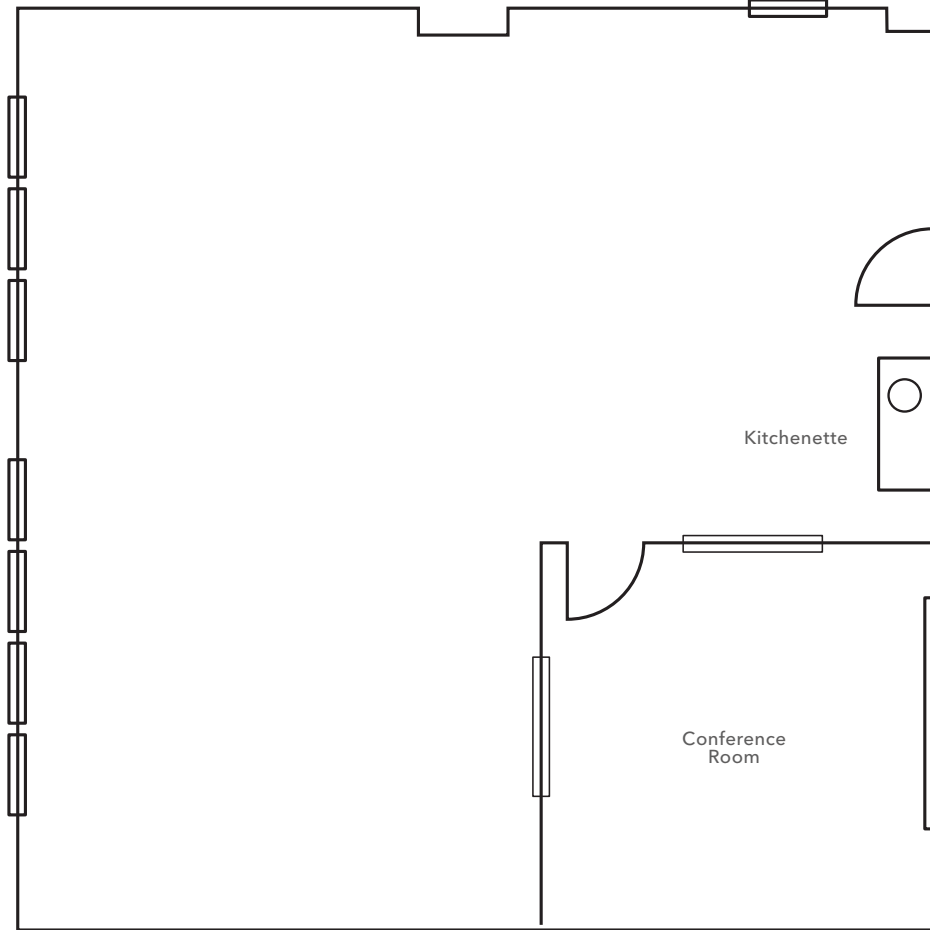


Ground Floor



Lower Level





Floor plan not to scale

±1,263 SF

AVAILABLE

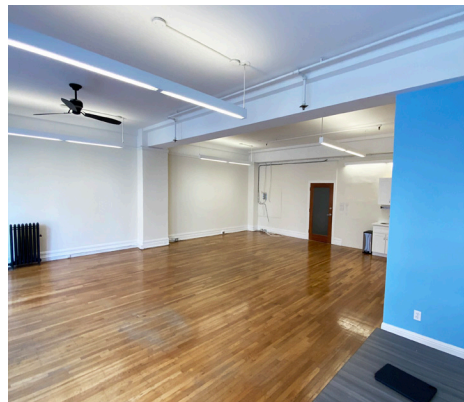
11'

HARD-LID CEILING HEIGHTS

NOW

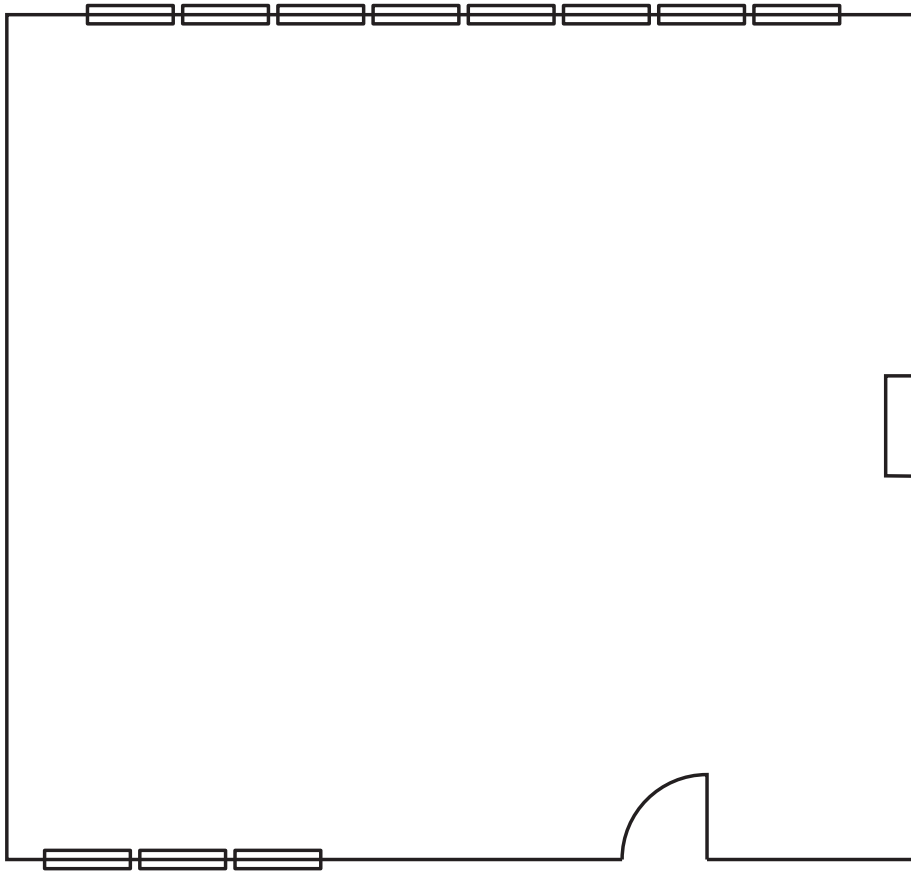
AVAILABLE

- Creative suite
- Open area
- Conference room
- Kitchenette
- Hardwood floors



KIDDER.COM | 450-466GEARY.COM

This information supplied herein is from sources we deem reliable. It is provided without any representation, warranty, or guarantee, expressed or implied as to its accuracy. Prospective Buyer or Tenant should conduct an independent investigation and verification of all matters deemed to be material, including, but not limited to, statements of income and expenses. Consult your attorney, accountant, or other professional advisor.



Floor plan not to scale

±1,170 SF

AVAILABLE

11'

HARD-LID CEILING HEIGHTS

NOW

AVAILABLE

Creative suite

Open area

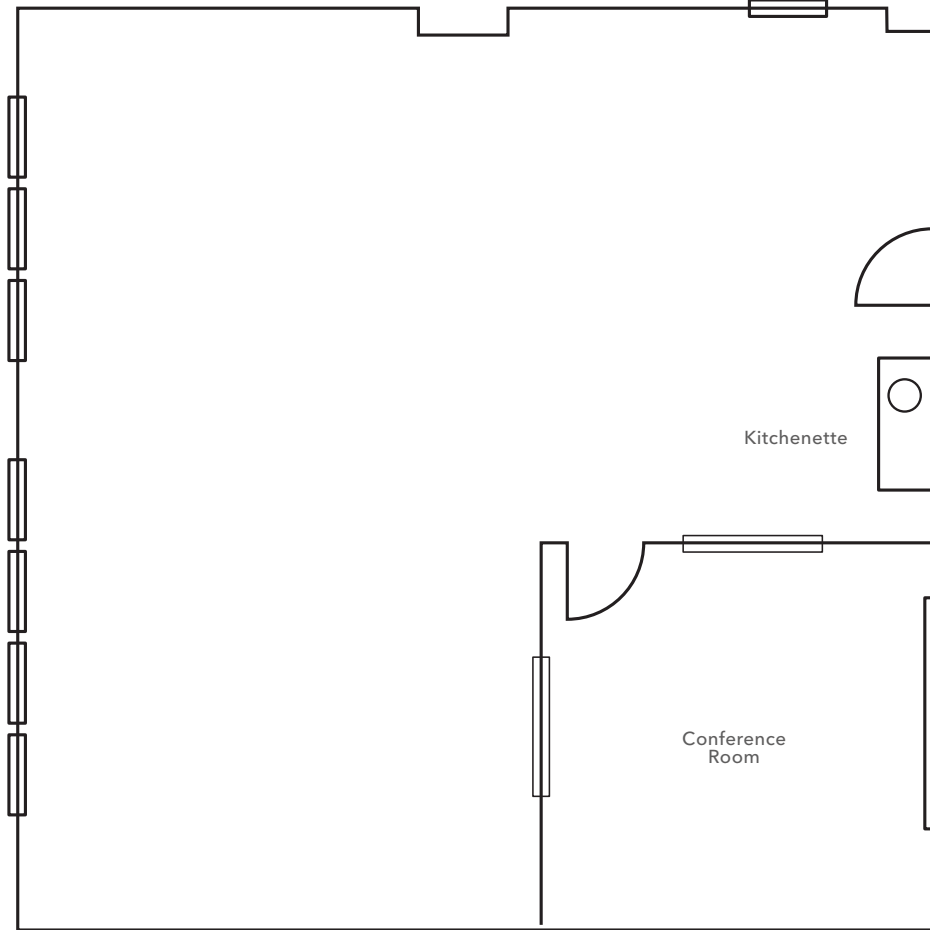
Skylight windows

Hardwood floors

Window line

Northern view





Floor plan not to scale

±1,256 SF

AVAILABLE

11'

HARD-LID CEILING HEIGHTS

NOW

AVAILABLE

Creative suite

Open area

Hardwood floors

Window line

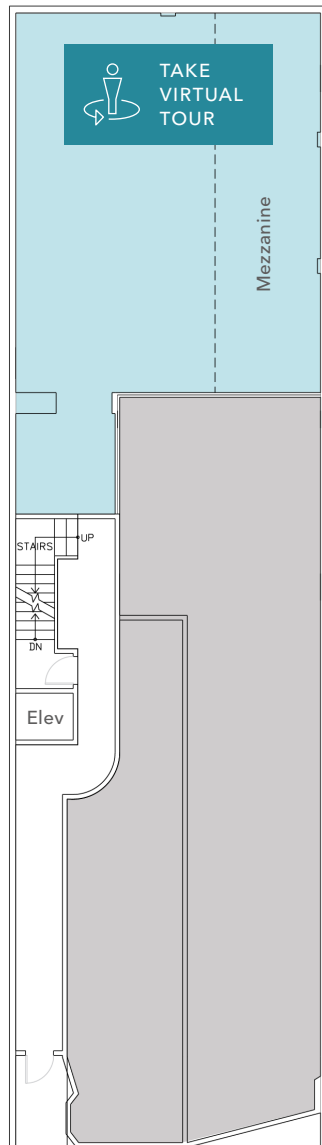
Northern view



KIDDER.COM | 450-466GEARY.COM

This information supplied herein is from sources we deem reliable. It is provided without any representation, warranty, or guarantee, expressed or implied as to its accuracy. Prospective Buyer or Tenant should conduct an independent investigation and verification of all matters deemed to be material, including, but not limited to, statements of income and expenses. Consult your attorney, accountant, or other professional advisor.





Floor plan not to scale

± 2,265 SF

AVAILABLE

18'

CEILING HEIGHTS

NOW

AVAILABLE

2 ground floor conference rooms

2 Mezzanine offices

Kitchenette

Larger open area

Skylights

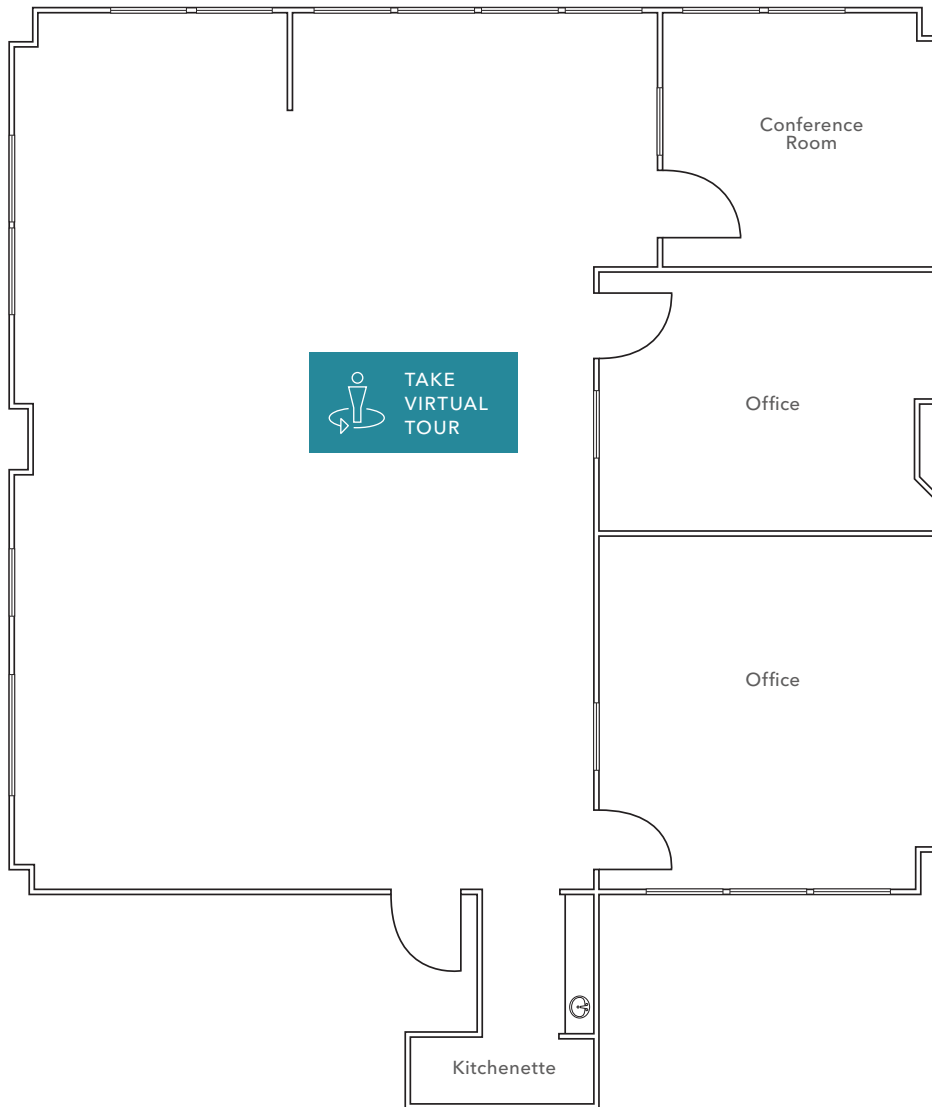
Wood floors



KIDDER.COM | 450-466GEARY.COM

This information supplied herein is from sources we deem reliable. It is provided without any representation, warranty, or guarantee, expressed or implied as to its accuracy. Prospective Buyer or Tenant should conduct an independent investigation and verification of all matters deemed to be material, including, but not limited to, statements of income and expenses. Consult your attorney, accountant, or other professional advisor.





Floor plan not to scale

± 1,330 SF

AVAILABLE

2

OFFICES

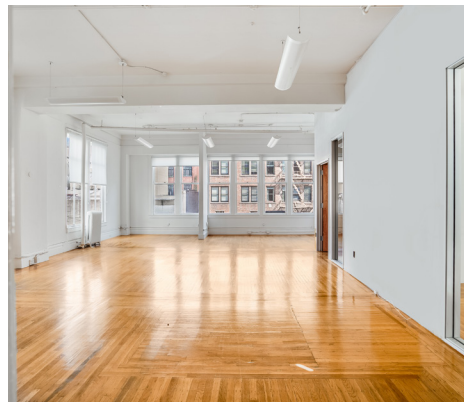
NOW

AVAILABLE

One (1) conference room

Open Area

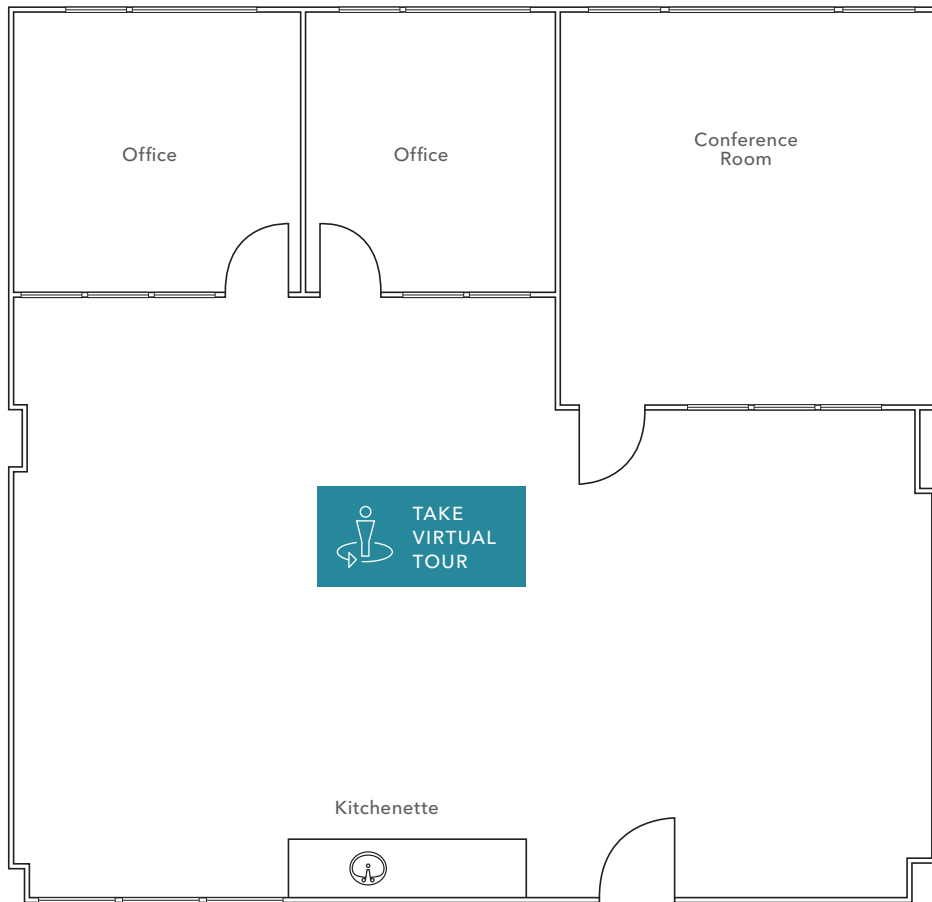
Kitchenette



KIDDER.COM | 450-466GEARY.COM

This information supplied herein is from sources we deem reliable. It is provided without any representation, warranty, or guarantee, expressed or implied as to its accuracy. Prospective Buyer or Tenant should conduct an independent investigation and verification of all matters deemed to be material, including, but not limited to, statements of income and expenses. Consult your attorney, accountant, or other professional advisor.





Floor plan not to scale

± 1,398 SF

AVAILABLE

2

OFFICES

NOW

AVAILABLE

One (1) conference room

Open Area

Kitchenette



KIDDER.COM | 450-466GEARY.COM

This information supplied herein is from sources we deem reliable. It is provided without any representation, warranty, or guarantee, expressed or implied as to its accuracy. Prospective Buyer or Tenant should conduct an independent investigation and verification of all matters deemed to be material, including, but not limited to, statements of income and expenses. Consult your attorney, accountant, or other professional advisor.

99

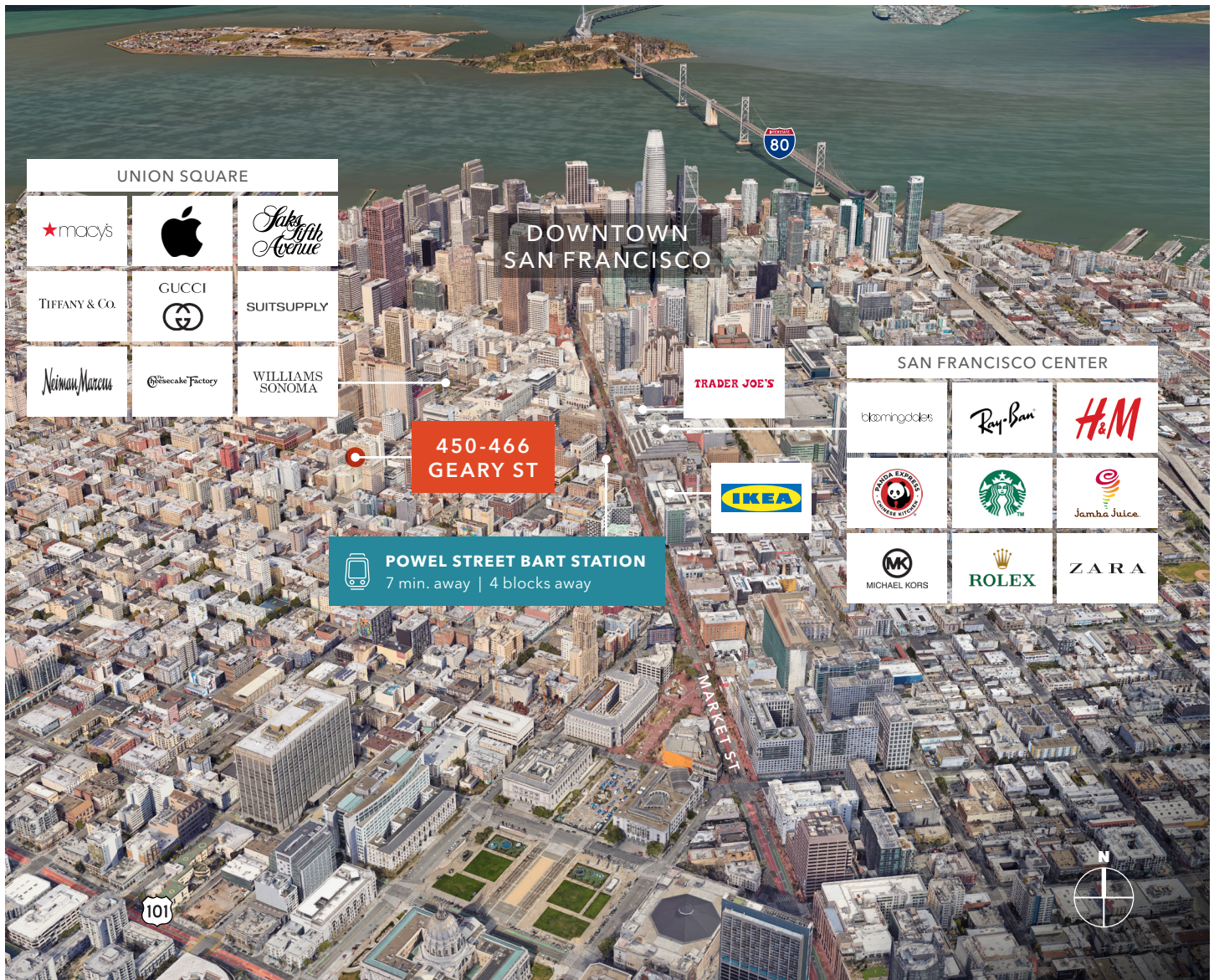
WALK SCORE
WALKER'S PARADISE

100

TRANSIT SCORE
RIDER'S PARADISE

90

BIKE SCORE
BIKER'S PARADISE



*For more leasing
information contact*

JIM WALKER
415.229.8910
jim.walker@kidder.com
LIC N° 01750435

KATE SCHMITZ
415.229.8905
kate.schmitz@kidder.com
LIC N° 01998222

KIDDER.COM | 450-466GEARY.COM

This information supplied herein is from sources we deem reliable. It is provided without any representation, warranty, or guarantee, expressed or implied as to its accuracy. Prospective Buyer or Tenant should conduct an independent investigation and verification of all matters deemed to be material, including, but not limited to, statements of income and expenses. Consult your attorney, accountant, or other professional advisor.