



FOR LEASE

# Creative, Open Space Office Suites Available

450-466 GEARY STREET, SAN FRANCISCO, CA

Located in the heart  
of San Francisco, near  
Union Square & the  
Theatre District



CLASSIC HISTORICAL  
LOW-RISE BUILDING

11'

HARD-LID  
CEILINGS



HARDWOOD  
FLOORS



OPERABLE  
WINDOWS

## BONUS COMMISSION

[VIEW WEBSITE](#)

[VIRTUAL TOURS  
AVAILABLE](#)

**JIM WALKER**

415.229.8910

[jim.walker@kidder.com](mailto:jim.walker@kidder.com)

LIC N° 01750435

**KATE SCHMITZ**

415.229.8905

[kate.schmitz@kidder.com](mailto:kate.schmitz@kidder.com)

LIC N° 01998222

**Kidder  
Mathews**

[KIDDER.COM](http://KIDDER.COM)

This information supplied herein is from sources we deem reliable. It is provided without any representation, warranty, or guarantee, expressed or implied as to its accuracy. Prospective Buyer or Tenant should conduct an independent investigation and verification of all matters deemed to be material, including, but not limited to, statements of income and expenses. Consult your attorney, accountant, or other professional advisor.



**FOR LEASE**

# 450 Geary St Building

450-466 GEARY ST, SAN FRANCISCO, CA

**±4,229**

**TOTAL SQUARE FEET**

**CREATIVE** 3 level suite

**GROUND LEVEL**

**TWO (2)** offices

**ADMIN** cove

**TEAM** room

**STORAGE** room

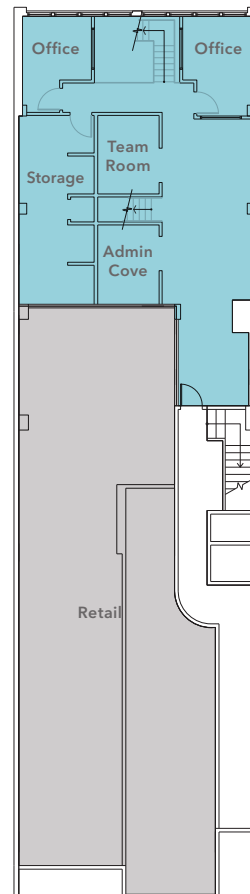
**OPEN** area

**HARD** wood floors

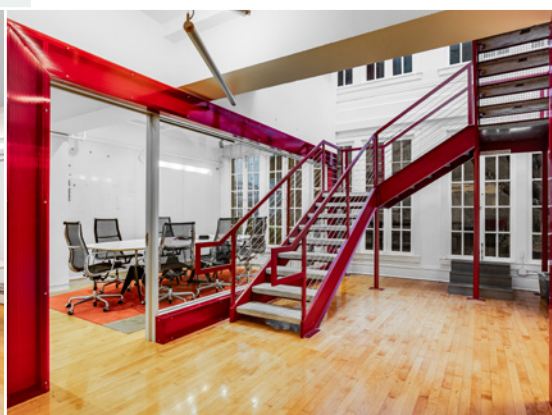


**CLICK TO VIEW  
360° VIRTUAL TOUR**

## Suite 100 - Ground Floor



FLOOR PLAN NOT TO SCALE



**KIDDER.COM**    **450-466GEARY.COM**

This information supplied herein is from sources we deem reliable. It is provided without any representation, warranty, or guarantee, expressed or implied as to its accuracy. Prospective Buyer or Tenant should conduct an independent investigation and verification of all matters deemed to be material, including, but not limited to, statements of income and expenses. Consult your attorney, accountant, or other professional advisor.

**km** Kidder  
Mathews

**FOR LEASE**

# 450 Geary St Building

450-466 GEARY ST, SAN FRANCISCO, CA

## MEZZANINE

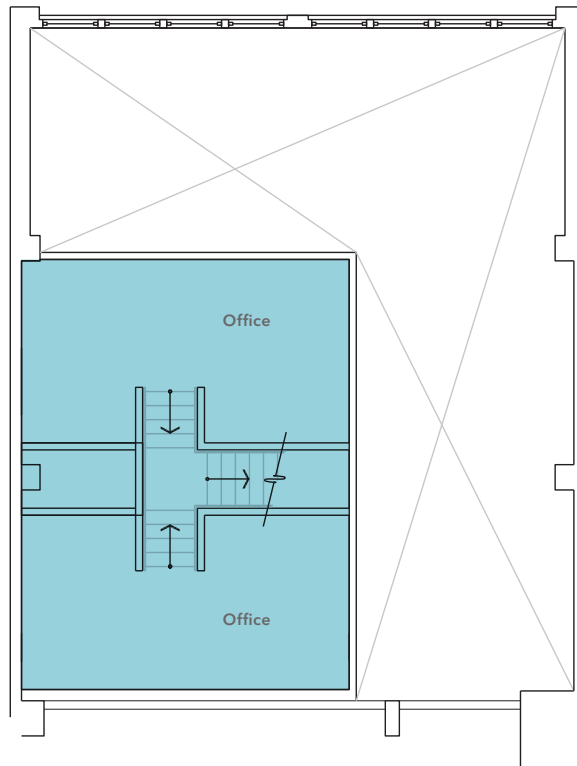
**TWO (2)** offices

**SKY** lights



**CLICK TO VIEW  
360° VIRTUAL TOUR**

## Suite 100 - Mezzanine



FLOOR PLAN NOT TO SCALE



**KIDDER.COM**    **450-466GEARY.COM**

This information supplied herein is from sources we deem reliable. It is provided without any representation, warranty, or guarantee, expressed or implied as to its accuracy. Prospective Buyer or Tenant should conduct an independent investigation and verification of all matters deemed to be material, including, but not limited to, statements of income and expenses. Consult your attorney, accountant, or other professional advisor.





**FOR LEASE**

# 450 Geary St Building

450-466 GEARY ST, SAN FRANCISCO, CA

## LOWER LEVEL

**SEVEN (7)** offices

**ONE (1)** conference room

**KITCHEN**

**OUTDOOR** patio

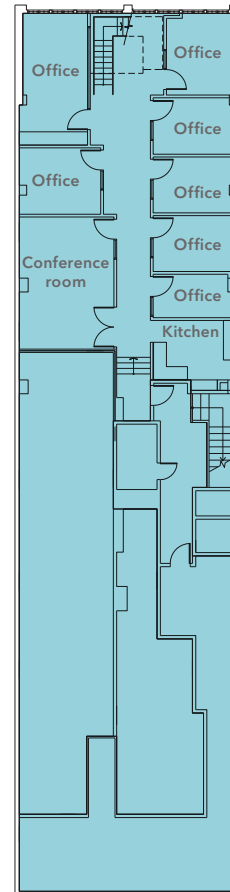
**ADA** wheel chair lift

**HARD** wood floors



**CLICK TO VIEW  
360° VIRTUAL TOUR**

## Suite 100 - Lower Level



FLOOR PLAN NOT TO SCALE



**KIDDER.COM**    **450-466GEARY.COM**

This information supplied herein is from sources we deem reliable. It is provided without any representation, warranty, or guarantee, expressed or implied as to its accuracy. Prospective Buyer or Tenant should conduct an independent investigation and verification of all matters deemed to be material, including, but not limited to, statements of income and expenses. Consult your attorney, accountant, or other professional advisor.



**FOR LEASE**

# 450 Geary St Building

450-466 GEARY ST, SAN FRANCISCO, CA

**± 1,263**

**SQUARE FEET**

**CREATIVE** suite

**OPEN** area with conference room and kitchenette

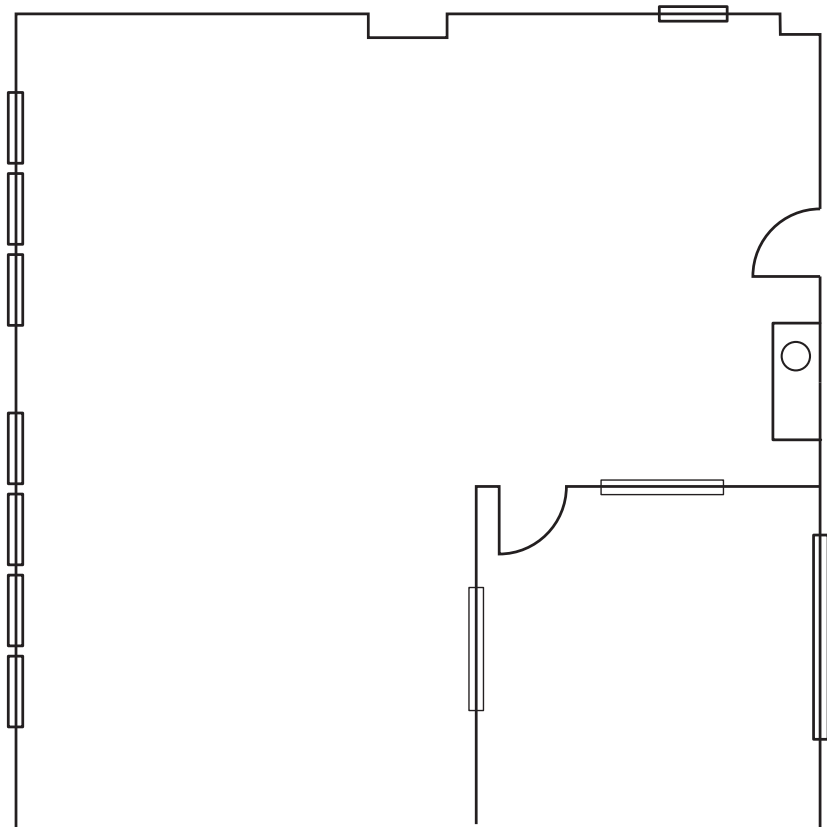
**HARDWOOD** floors

**11' HARD-LID** ceiling heights



**CLICK TO VIEW  
360° VIRTUAL TOUR**

## Suite 200



FLOOR PLAN NOT TO SCALE



**KIDDER.COM**    **450-466GEARY.COM**

This information supplied herein is from sources we deem reliable. It is provided without any representation, warranty, or guarantee, expressed or implied as to its accuracy. Prospective Buyer or Tenant should conduct an independent investigation and verification of all matters deemed to be material, including, but not limited to, statements of income and expenses. Consult your attorney, accountant, or other professional advisor.

**km** Kidder Mathews

**FOR LEASE**

# 450 Geary St Building

450-466 GEARY ST, SAN FRANCISCO, CA

**± 1,289**

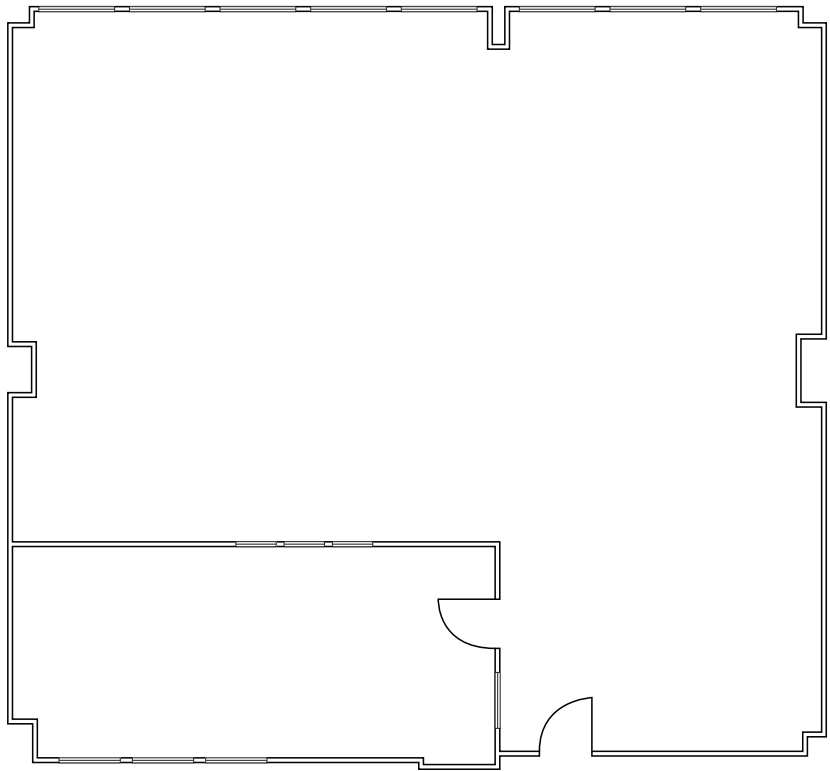
**SQUARE FEET**

**OPEN** area with conference room



**CLICK TO VIEW  
360° VIRTUAL TOUR**

## Suite 300



FLOOR PLAN NOT TO SCALE



**KIDDER.COM**    **450-466GEARY.COM**

This information supplied herein is from sources we deem reliable. It is provided without any representation, warranty, or guarantee, expressed or implied as to its accuracy. Prospective Buyer or Tenant should conduct an independent investigation and verification of all matters deemed to be material, including, but not limited to, statements of income and expenses. Consult your attorney, accountant, or other professional advisor.



**FOR LEASE**

# 466 Geary St Building

450-466 GEARY ST, SAN FRANCISCO, CA

**± 2,265**

**SQUARE FEET**

**2** ground floor conference rooms

**2** Mezzanine offices

**KITCHENETTE**

**LARGER** open area

**18** foot ceilings

**SKYLIGHTS**

**WOOD** floors



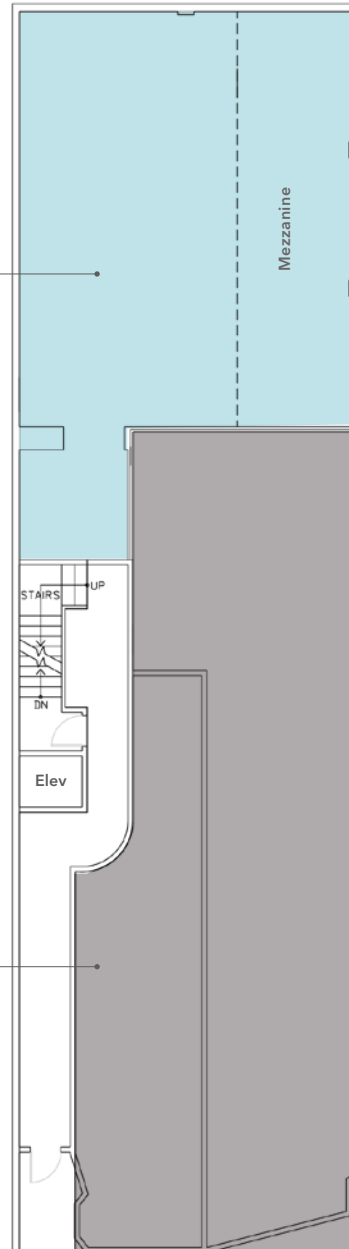
**CLICK TO VIEW  
360° VIRTUAL TOUR**



## Suite 100

**AVAILABLE  
OFFICE SPACE**

**RETAIL SPACE**



FLOOR PLAN NOT TO SCALE

**KIDDER.COM**    **450-466GEARY.COM**

This information supplied herein is from sources we deem reliable. It is provided without any representation, warranty, or guarantee, expressed or implied as to its accuracy. Prospective Buyer or Tenant should conduct an independent investigation and verification of all matters deemed to be material, including, but not limited to, statements of income and expenses. Consult your attorney, accountant, or other professional advisor.



**FOR LEASE**

# 466 Geary St Building

450-466 GEARY ST, SAN FRANCISCO, CA

**± 1,265**

**SQUARE FEET**

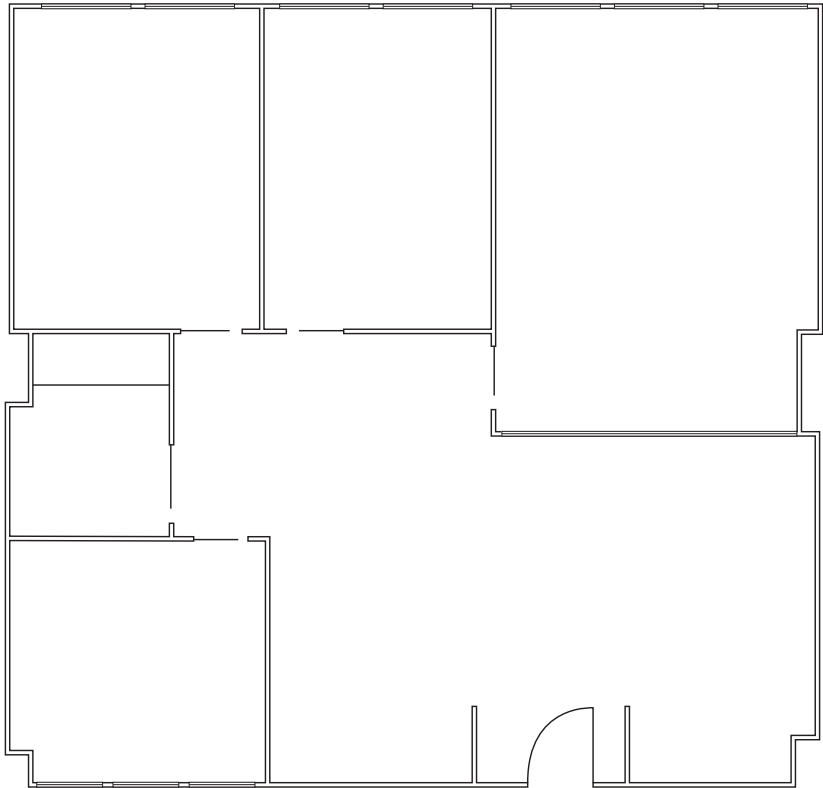
**ONE** conference room

**THREE** offices



**CLICK TO VIEW  
360° VIRTUAL TOUR**

## Suite 201



**KIDDER.COM**

This information supplied herein is from sources we deem reliable. It is provided without any representation, warranty, or guarantee, expressed or implied as to its accuracy. Prospective Buyer or Tenant should conduct an independent investigation and verification of all matters deemed to be material, including, but not limited to, statements of income and expenses. Consult your attorney, accountant, or other professional advisor.

**km** Kidder Mathews



**FOR LEASE**

# 466 Geary St Building

450-466 GEARY ST, SAN FRANCISCO, CA

**± 1,330**  
**SQUARE FEET**

**ONE** conference room

**TWO** offices

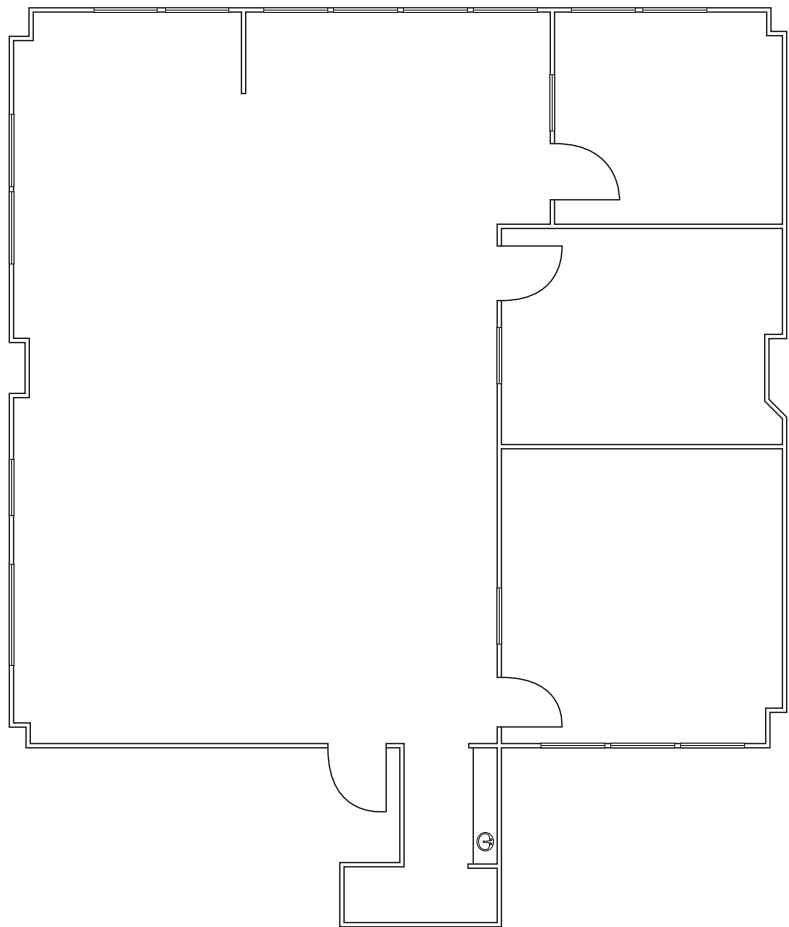
**OPEN** Area

**KITCHENETTE**



**CLICK TO VIEW  
360° VIRTUAL TOUR**

## Suite 400



**KIDDER.COM**

This information supplied herein is from sources we deem reliable. It is provided without any representation, warranty, or guarantee, expressed or implied as to its accuracy. Prospective Buyer or Tenant should conduct an independent investigation and verification of all matters deemed to be material, including, but not limited to, statements of income and expenses. Consult your attorney, accountant, or other professional advisor.

**km** Kidder  
Mathews

**FOR LEASE**

# 466 Geary St Building

450-466 GEARY ST, SAN FRANCISCO, CA

**± 1,398**  
**SQUARE FEET**

**ONE** conference room

**TWO** offices

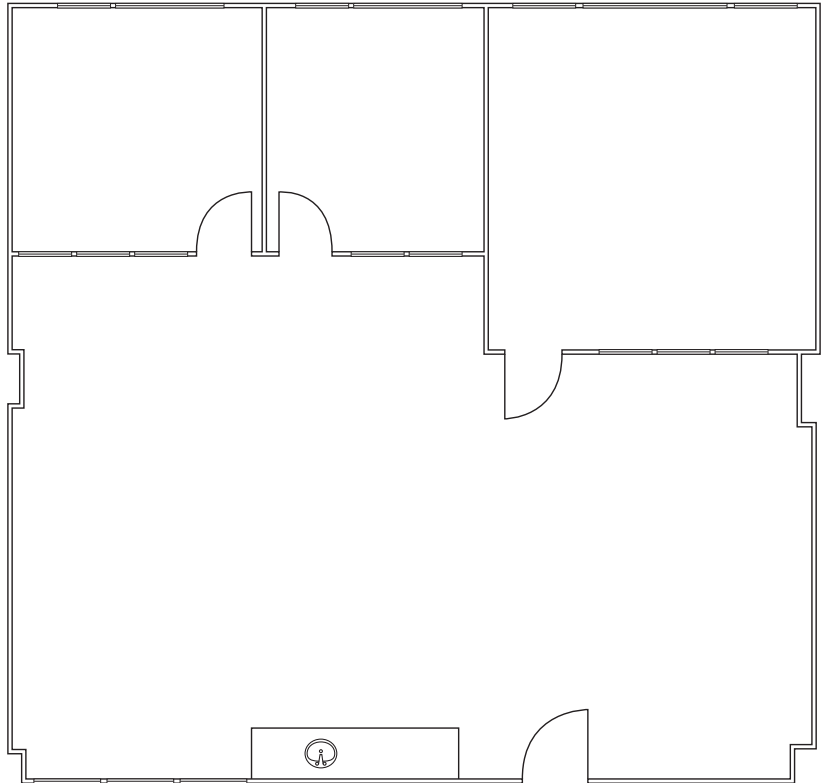
**OPEN** Area

**KITCHENETTE**



**CLICK TO VIEW  
360° VIRTUAL TOUR**

## Suite 401



**KIDDER.COM**

This information supplied herein is from sources we deem reliable. It is provided without any representation, warranty, or guarantee, expressed or implied as to its accuracy. Prospective Buyer or Tenant should conduct an independent investigation and verification of all matters deemed to be material, including, but not limited to, statements of income and expenses. Consult your attorney, accountant, or other professional advisor.

**km** Kidder  
Mathews

FOR LEASE

# 450 Geary St Building

450-466 GEARY ST, SAN FRANCISCO, CA

99

WALKER'S  
PARADISE

93

RIDER'S  
PARADISE

76

VERY  
BIKEABLE

SUBJECT  
PROPERTY

US  
101

SAN FRANCISCO  
CITY HALL

For more information about  
this property, please contact

JIM WALKER  
415.229.8910  
[jim.walker@kiddier.com](mailto:jim.walker@kiddier.com)  
LIC N° 01750435

KATE SCHMITZ  
415.229.8905  
[kate.schmitz@kiddier.com](mailto:kate.schmitz@kiddier.com)  
LIC N° 01998222

KIDDER.COM 450-466GEARY.COM

This information supplied herein is from sources we deem reliable. It is provided without any representation, warranty, or guarantee, expressed or implied as to its accuracy. Prospective Buyer or Tenant should conduct an independent investigation and verification of all matters deemed to be material, including, but not limited to, statements of income and expenses. Consult your attorney, accountant, or other professional advisor.

**km** Kidder  
Mathews