



FOR LEASE

## Retail Opportunities in the Theatre District

450-466 GEARY, SAN FRANCISCO, CA

Located in the heart  
of San Francisco, near  
Union Square & the  
Theatre District



CLASSIC HISTORICAL  
LOW-RISE BUILDING

11' HARD-LID  
CEILINGS

450 GEARY ±2,147 SF

466 GEARY ±2,303 SF

MOTIVATED ownership

WIDE variety of uses  
encouraged

BONUS commission

**BONUS COMMISSION**

**VIEW WEBSITE**

JIM WALKER

415.229.8910

[jim.walker@kidder.com](mailto:jim.walker@kidder.com)

LIC N° 01750435

KATE H. SCHMITZ

415.229.8905

[kate.schmitz@kidder.com](mailto:kate.schmitz@kidder.com)

LIC N° 01998222

**Kidder  
Mathews**

[KIDDER.COM](http://KIDDER.COM)

This information supplied herein is from sources we deem reliable. It is provided without any representation, warranty, or guarantee, expressed or implied as to its accuracy. Prospective Buyer or Tenant should conduct an independent investigation and verification of all matters deemed to be material, including, but not limited to, statements of income and expenses. Consult your attorney, accountant, or other professional advisor.



**FOR LEASE**

# 450 Geary Street

SAN FRANCISCO, CA

**±2,147 SQUARE FEET**

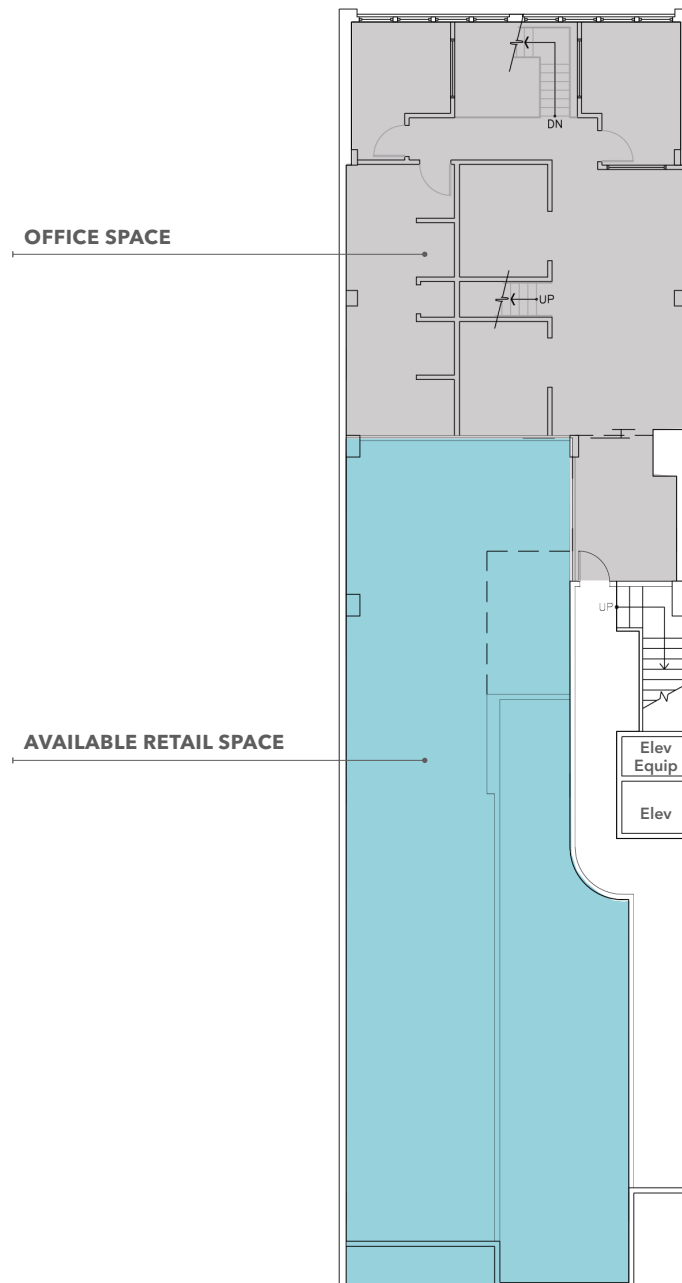
**CAN BE** divisible

**MOTIVATED** ownership

**WIDE VARIETY** of  
uses encouraged

**BONUS** commission

## Ground Floor Retail Space



**JIM WALKER**

415.229.8910

[jim.walker@kidder.com](mailto:jim.walker@kidder.com)

LIC N° 01750435

**KATE H. SCHMITZ**

415.229.8905

[kate.schmitz@kidder.com](mailto:kate.schmitz@kidder.com)

LIC N° 01998222

**KIDDER.COM**    **450-466GEARY.COM**

**km** Kidder  
Mathews

This information supplied herein is from sources we deem reliable. It is provided without any representation, warranty, or guarantee, expressed or implied as to its accuracy. Prospective Buyer or Tenant should conduct an independent investigation and verification of all matters deemed to be material, including, but not limited to, statements of income and expenses. Consult your attorney, accountant, or other professional advisor.

**FOR LEASE**

# 466 Geary Street

SAN FRANCISCO, CA

**±2,303 SQUARE FEET**

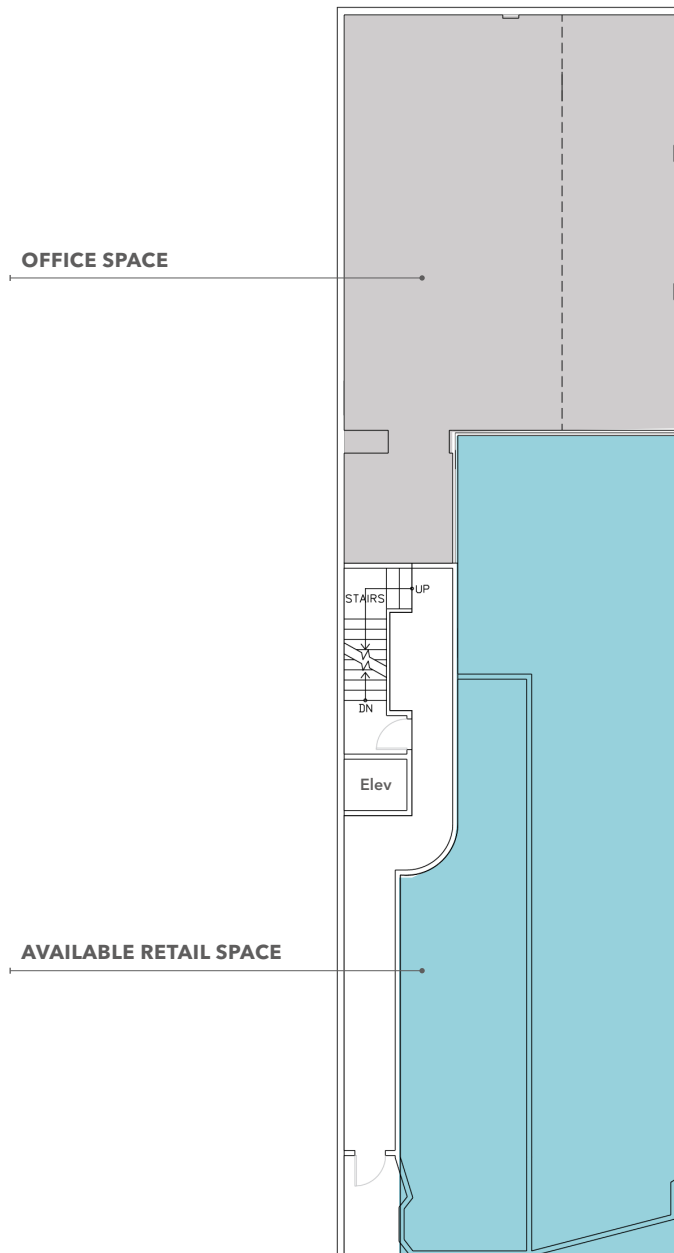
**CAN BE** divisible

**MOTIVATED** ownership

**WIDE VARIETY** of  
uses encouraged

**BONUS** commission

## Ground Floor Retail Space



**JIM WALKER**

415.229.8910

[jim.walker@kidder.com](mailto:jim.walker@kidder.com)

LIC N° 01750435

**KATE H. SCHMITZ**

415.229.8905

[kate.schmitz@kidder.com](mailto:kate.schmitz@kidder.com)

LIC N° 01998222

**KIDDER.COM**    **450-466GEARY.COM**

**km** Kidder  
Mathews

This information supplied herein is from sources we deem reliable. It is provided without any representation, warranty, or guarantee, expressed or implied as to its accuracy. Prospective Buyer or Tenant should conduct an independent investigation and verification of all matters deemed to be material, including, but not limited to, statements of income and expenses. Consult your attorney, accountant, or other professional advisor.



FOR LEASE

# 450-466 Geary Street

SAN FRANCISCO, CA

99

WALKER'S  
PARADISE

93

RIDER'S  
PARADISE

76

VERY  
BIKEABLE

SUBJECT  
PROPERTY

WESTFIELD SAN FRANCISCO CENTRE

NORDSTROM

BURBERRY

L  
V

Madewell

bloomingdale's

TRADER JOE'S

MICHAEL KORS

Walgreens

H&M

COACH

lululemon

ROLEX

US  
101

SAN FRANCISCO  
CITY HALL

For more information about  
this property, please contact

JIM WALKER

415.229.8910

[jim.walker@kiddier.com](mailto:jim.walker@kiddier.com)

LIC N° 01750435

KATE H. SCHMITZ

415.229.8905

[kate.schmitz@kiddier.com](mailto:kate.schmitz@kiddier.com)

LIC N° 01998222

KIDDER.COM

450-466GEARY.COM

This information supplied herein is from sources we deem reliable. It is provided without any representation, warranty, or guarantee, expressed or implied as to its accuracy. Prospective Buyer or Tenant should conduct an independent investigation and verification of all matters deemed to be material, including, but not limited to, statements of income and expenses. Consult your attorney, accountant, or other professional advisor.

**km** Kidder  
Mathews